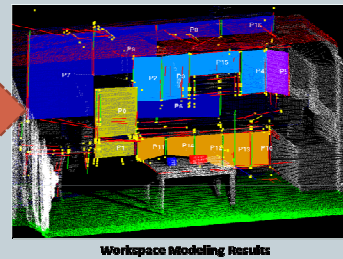
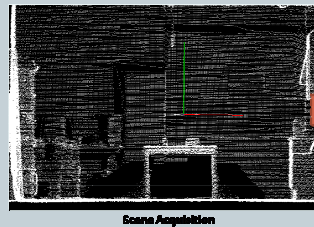


**Prof. Sukhan Lee - Intelligent Systems Research Institute,
SungKyunKwan University, Suwon, Korea.**

Develop “HomeMate” for silver generation or disabled person in home

Development on **Robust recognition** to the environmental changes and diversity of target objects by **fusing Cognitive process and practical vision process**



Development on Motion planner

Taxi service robot that can transport people safely by semi/full automatic system in town, campus, tourist attraction environment that many pedestrians and obstacles exist

- Environment recognition/understand
- Pedestrian/obstacle/road condition/traffic sign recognition ability
- Human-Vehicle Interaction based user convenience maximization
- User intention recognition and execution about call/drive/ride share

